

## RANGE COMPOSITION

EVO900: a range designed to guarantee the highest level of performance, reliability, energy saving, safety standards and ergonomic operation. These concepts are reflected throughout the line in its modularity, construction and numerous configurations: countertop (on base or table), free-standing, on concrete or stainless steel plinth, bridged or cantilever. Thanks to its advanced technology and premium performance, EVO900 is a perfect solution for restaurants as well as large institutions needing high power and high productivity. The model detailed in this sheet is a gas solid top ideal for cooking items requiring differentiated heating zones.



392018

# EVO900

## GAS SOLID TOP **ZANUSSI** PROFESSIONAL

## FUNCTIONAL AND CONSTRUCTION FEATURES

- ◆ The gas solid top is ideal for kitchens needing a flexible and powerful cooking top. It allows the chef to easily move pots and pans from one area of the cooking surface to another without the need for lifting.
- ◆ Central burner with optimized combustion, maximum power 10.5 kW, with flame failure device and protected pilot light. Piezo ignition.
- ◆ Durable cast-iron cooking plate with differentiated heating zones, maximum temperature in the centre, 500°C, decreasing towards the perimeter.
- ◆ Worktop in 20/10 stainless steel. Front and side panels in stainless steel with Scotch Brite finish.
- ◆ All models have right-angled side edges to allow flush fitting between units, eliminating gaps and dirt traps.
- ◆ The special design of the control knob system guarantees against

water infiltration.

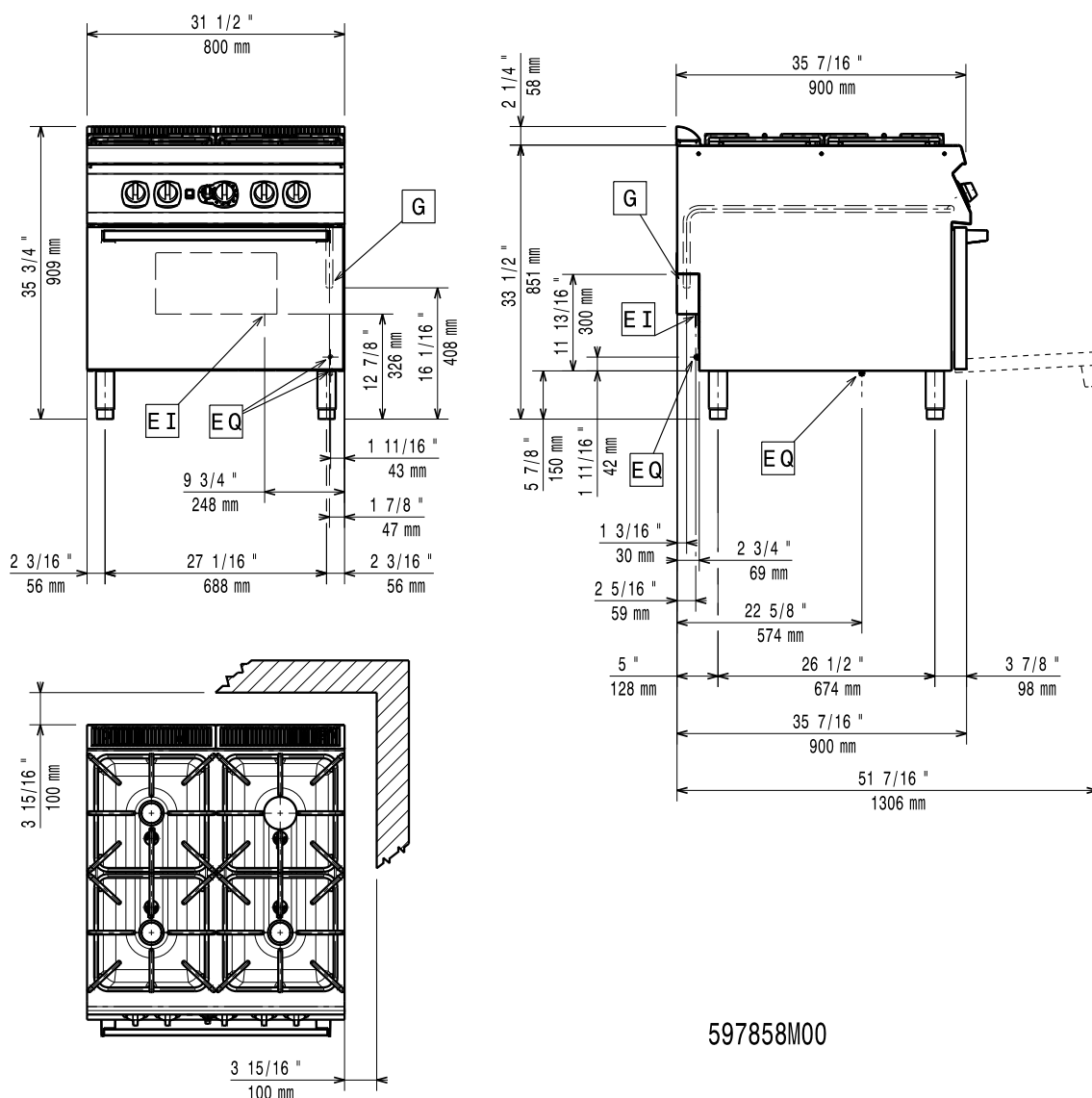
- ◆ Main connections can be via the bottom or the rear of the unit.
- ◆ All top models can be easily mounted on table tops, open base cupboards, bridging supports or cantilever systems.
- ◆ All gas appliances are supplied for use with natural gas or LPG. Conversion jets supplied as standard.
- ◆ The special design of the control knobs and bezels guarantees

against water infiltration.

- ◆ IPX5 water protection.

\*In accordance with CE regulations for gas models belonging to Class B11 (power over 14 kW), it is necessary to install a chimney (if installed under a hood) or chimney and draft diverter if the waste gases are vented directly outside.

TECHNICAL DATA	
CHARACTERISTICS	MODELS
	<b>Z9STGH1000 392018</b>
Power supply	Gas
External dimensions - mm	
width	800
depth	900
height	250
Solid top area - mm	
width	800
depth	700
Control Knob	Gas cock
Solid top heat input - kW	10.5
Power - kW	
gas	10.5
Total Power - kW	10.5
Net weight - kg.	92



597858M00

**LEGEND**

G - Gas connection

**Z9STGH1000****392018**

1/2"

**OPTIONAL ACCESSORIES****ACCESSORIES****MODELS****Z9STGH1000  
392018**

2 SIDE COVERING PANELS H=250-D=900-Z/OEM

206321

CHIMNEY UPSTAND 800MM

206304

DRAUGHT DIVERTER WITH 150 MM DIAMETER

206132

FLUE CONDENSER FOR 1 MODULE DIAM.150MM

206246

FRONTAL HANDRAIL 1200 MM

206191

FRONTAL HANDRAIL 1600 MM

206192

FRONTAL HANDRAIL 400 MM

206166

FRONTAL HANDRAIL 800 MM

206167

JUNCTION SEALING KIT

206086

LARGE HANDRAIL(PORIONING SHELF)400 MM

206185

LARGE HANDRAIL(PORIONING SHELF)800 MM

206186

MATCHING RING FOR FLUE CONDENSER 150DIAM

206133

PRESSURE REGULATOR FOR GAS UNITS

927225

SIDE HANDRAIL-RIGHT/LEFT HAND-900 LINE

206165

SUPPORT FOR "BRIDGE" SYSTEM 1000 MM

206138

SUPPORT FOR "BRIDGE" SYSTEM 1200 MM

206139

SUPPORT FOR "BRIDGE" SYSTEM 1400 MM

206140

SUPPORT FOR "BRIDGE" SYSTEM 1600 MM

206141

SUPPORT FOR "BRIDGE" SYSTEM 800 MM

206137

WATER COLUMN EXTENSION FOR 900 LINE

206290

WATER COLUMN WITH SWIVEL ARM

206289



ISO 14001



www.zanussiprofessional.com