

RANGE COMPOSITION

EVO900: a range designed to guarantee the highest level of performance, reliability, energy saving, safety standards and ergonomic operation. These concepts are reflected throughout the line in its modularity, construction and numerous configurations: countertop (on base or table), free-standing, on concrete or stainless steel plinth, bridged or cantilever. Thanks to its advanced technology and premium performance, EVO900 is a perfect solution for restaurants as well as large institutions needing high power and high productivity. The models detailed in this sheet are three free-standing gas solid tops, one on a gas oven, one with 2 burners on a gas oven and one with 2 burners on gas oven and cupboard (simple service) ideal for cooking items requiring differentiated heating zones.



392021

EVO900

FREESTANDING GAS SOLID TOPS **ZANUSSI** PROFESSIONAL

FUNCTIONAL AND CONSTRUCTION FEATURES

- ◆ Single central burner with optimized combustion (10,5 kW maximum power for the full module versions, 5,5 kW for the half module version), flame failure device and protected pilot light. Piezo ignition.
- ◆ Durable cast-iron cooking plate with differentiated heating zones, maximum temperature in the centre, 500°C, decreasing towards the perimeter.
- ◆ Worktop in 20/10 stainless steel. Front and side panels in stainless steel with Scotch Brite finish.
- ◆ All models have right-angled side edges to allow flush fitting between units, eliminating gaps and dirt traps.
- ◆ The high efficiency "flower flame" burners (on burner models) allow for the flame to be precisely regulated and provide the proper amount of heat to pots and pans of different sizes (from a minimum of 10cm diameter to a maximum of 40 cm diameter).
- ◆ Choice of two burner sizes for efficiently heating both large and small pans:
 - 60 mm burners with continuous power regulation from 1,5 to 6 kW
 - 100 mm burners with continuous power regulation from 2,2 to 10 kW
- ◆ Each burner has:
 - Flame failure device to protect against

accidental extinguishing of the flame.

- Optimized combustion.
- Protected pilot light.
- ◆ Gas oven with stainless steel tubular, high efficiency, atmospheric burners positioned

below the ribbed cast iron base plate and a thermostat adjustable from 120° to 280°C.

- ◆ Stainless steel oven chamber with 3 levels of runners to accommodate 2/1GN shelves
- ◆ Ribbed, cast-iron oven base plate.

TECHNICAL DATA			
CHARACTERISTICS	MODELS		
	Z9STGH10G0 392019	Z9STGH30G0 392020	Z9STGL3010 392021
Power supply	Gas	Gas	Gas
External dimensions - mm			
width	800	800	1200
depth	900	900	900
height	850	850	850
height adjustment	50	50	50
Solid top area - mm			
width	800	380	800
depth	700	700	700
Oven cavity - mm			
width	575	575	575
depth	700	700	650
height	300	300	300
Oven			
heat input - kW	8.5	8.5	8.5
temperature min-max - °C	120, 280	120, 280	120, 280
Storage cupboard - mm			
width			335
depth			740
height			350
Solid top heat input - kW	10.5	5.5	10.5
Back burner dimensions - mm		Ø 100	Ø 100
Back burners power - kW		10	10
Front burners dimension - mm		Ø 60	Ø 60
Front burners power - kW		6	6
Total Power - kW	19	30	35
Net weight - kg.	171	130	207
INCLUDED ACCESSORIES			
2/1 GN CHROME GRID	1	1	1
DOOR FOR OPEN BASE CUPBOARD-ZANUSSI			1

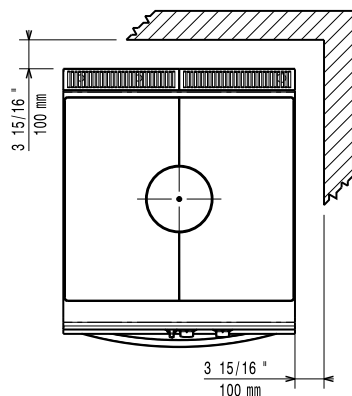
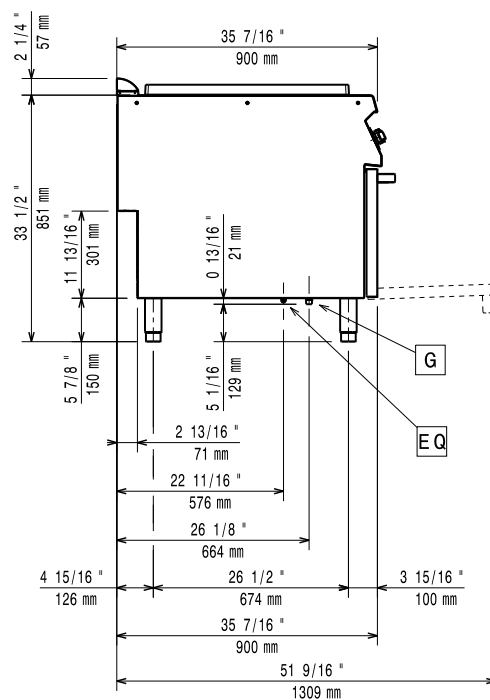
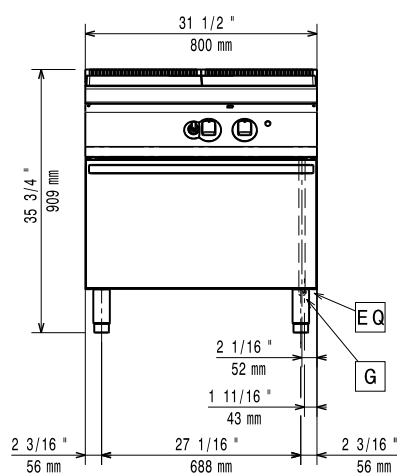
- ◆ Stainless steel feet adjustables up to a height of 50 mm.
- ◆ Recessed, double skinned, insulated door.
- ◆ The special design of the control knob system guarantees against water infiltration.
- ◆ Main connections can be via the base of the unit.
- ◆ All models provided with service duct to facilitate installation.
- ◆ All gas appliances are supplied for use with natural gas, with LPG conversion jets supplied as standard.
- ◆ IPX5 water protection.

*In accordance with CE regulations for gas models belonging to Class B11 (power over 14 kW), it is necessary to install a chimney (if installed under a hood) or chimney and draft diverter if the waste gases are vented directly outside.

OPTIONAL ACCESSORIES			
ACCESSORIES	MODELS		
	Z9STGH10G0 392019	Z9STGH30G0 392020	Z9STGL3010 392021
2 DRAWERS (H=100MM) BASE 900 LINE-ZAN			206361
2 PANELS FOR SERVICE DUCT (BACK TO BACK)	206202	206202	206202
2 PANELS FOR SERVICE DUCT (SINGLE INST.)	206181	206181	206181
2 SIDE COVERING PANELS H=700-D=900-Z/OEM	206335	206335	206335
2 SIDE KICKING STRIPS - 900 LINE	206180	206180	206180
2 SIDE KICKING STRIPS-CONCRETE INST-900	206157	206157	206157
4 FEET FOR CONCRETE INSTALLATION	206210	206210	206210
4 WHEELS (2 WITH BRAKE)	206188	206188	206188
CHIMNEY UPSTAND 1200MM			206306
CHIMNEY UPSTAND 800MM	206304	206304	
DOOR FOR OPEN BASE CUPBOARD-ZANUSSI			206342
DRAUGHT DIVERTER WITH 150 MM DIAMETER	206132	206132	206132
ELECTRIC HEATING KIT FOR CUPBOARDS			206259
FLANGED FEET KIT	206136	206136	206136
FLUE CONDENSER FOR 1 MODULE DIAM.150MM	206246	206246	206246
FRONT.KICK.STRIP F.CONCRETE INST.1000 MM	206150	206150	206150
FRONT.KICK.STRIP F.CONCRETE INST.1200 MM	206151	206151	206151
FRONT.KICK.STRIP F.CONCRETE INST.1600 MM	206152	206152	206152
FRONT.KICK.STRIP F.CONCRETE INST.800 MM	206148	206148	
FRONTAL HANDRAIL 1200 MM	206191	206191	206191
FRONTAL HANDRAIL 1600 MM	206192	206192	206192
FRONTAL HANDRAIL 400 MM	206166	206166	206166
FRONTAL HANDRAIL 800 MM	206167	206167	206167
FRONTAL KICKING STRIP 1000 MM	206177	206177	206177
FRONTAL KICKING STRIP 1200 MM	206178	206178	206178
FRONTAL KICKING STRIP 1600 MM	206179	206179	206179
FRONTAL KICKING STRIP 800 MM	206176	206176	
JUNCTION SEALING KIT	206086	206086	206086
LARGE HANDRAIL(PORIONING SHELF)400 MM	206185	206185	206185
LARGE HANDRAIL(PORIONING SHELF)800 MM	206186	206186	206186
MATCHING RING FOR FLUE CONDENSER 150DIAM	206133	206133	206133
PAIR OF CAST IRON GRIDS		206208	206208
PRESSURE REGULATOR FOR GAS UNITS	927225	927225	927225
S/S GRID FOR DOUBLE BURNER-900 LINE		206298	206298
SIDE HANDRAIL-RIGHT/LEFT HAND-900 LINE	206165	206165	206165
SINGLE BURNER RADIANT PLATE - 900 LINE		206170	206170
SINGLE BURNER RIBBED PLATE - 900 LINE		206172	206172
SINGLE BURNER SMOOTH PLATE - 900 LINE		206171	206171
WATER COLUMN EXTENSION FOR 900 LINE	206290	206290	206290
WATER COLUMN WITH SWIVEL ARM	206289	206289	206289



www.zanussiprofessional.com



59785MA00

LEGEND

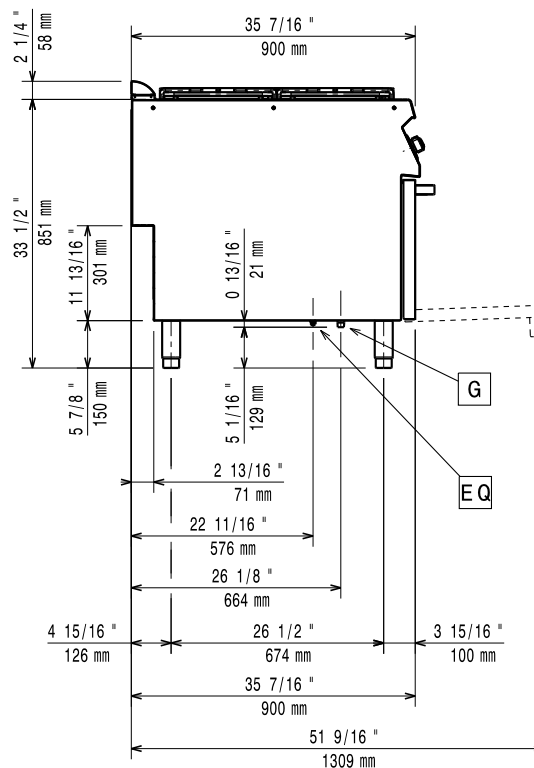
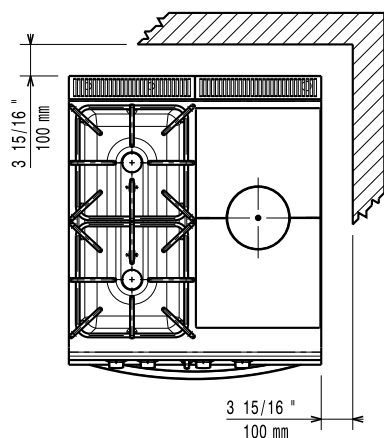
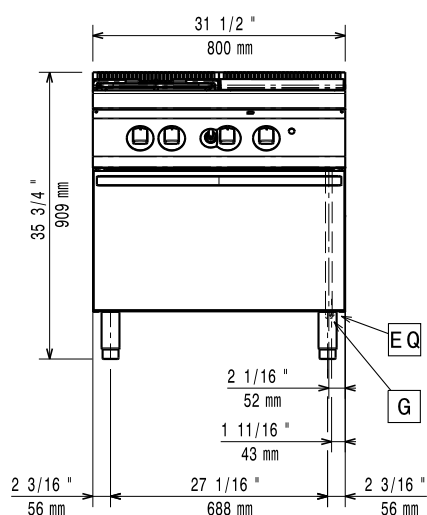
G - Gas connection

Z9STGH10G0
392019

1/2"

ZANUSSI
PROFESSIONAL

www.zanussiprofessional.com



59785MB00

LEGEND

G - Gas connection

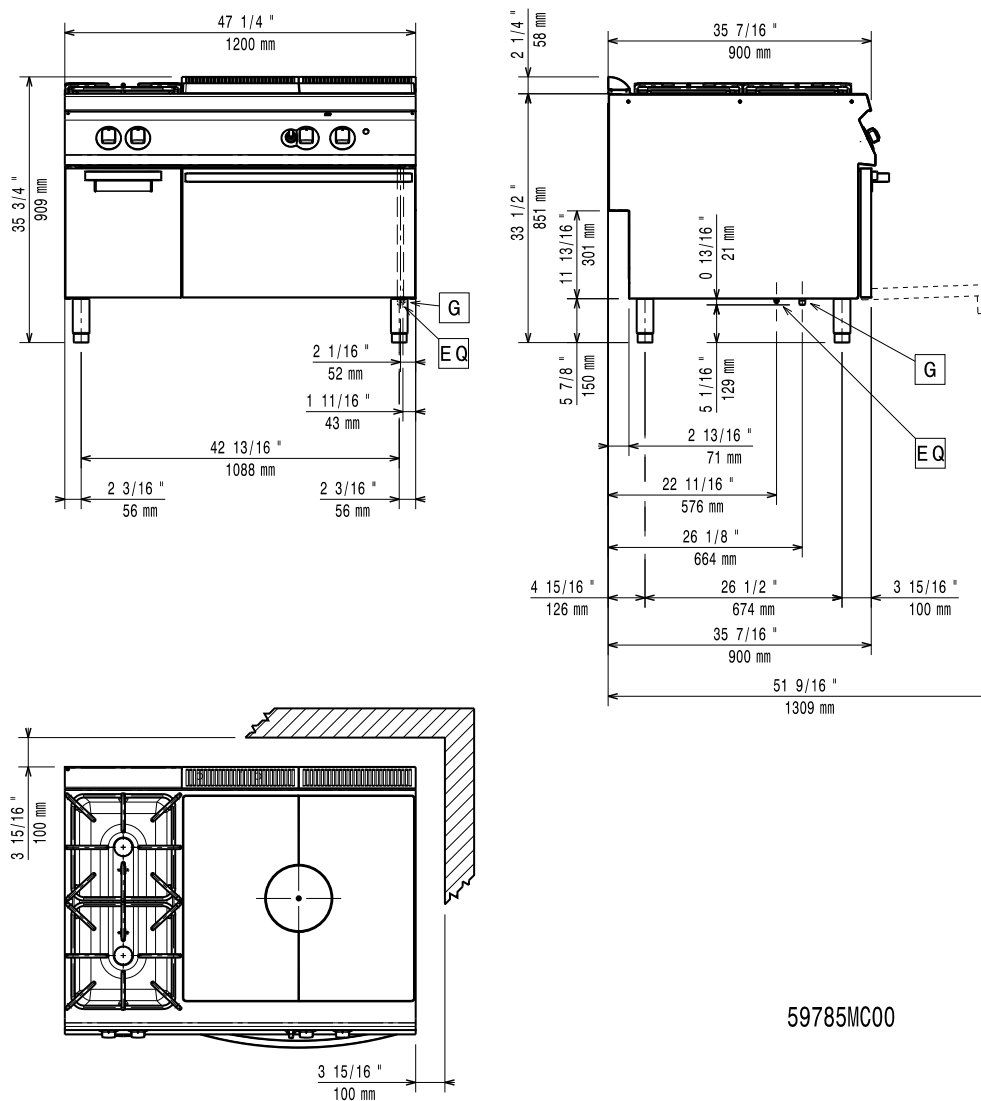
Z9STGH30G0

392020

1/2"

ZANUSSI
 PROFESSIONAL

www.zanussiprofessional.com



59785MC00

LEGEND

G - Gas connection

Z9STGL3010
392021

1/2"

ZANUSSI
PROFESSIONAL

www.zanussiprofessional.com