

Modular Cooking Range Line EVO900 One Well Gas Tube Fryer 23 liter

ITEM # _____
MODEL # _____
NAME # _____
SIS # _____
AIA # _____



Modular Cooking Range Line

EVO900 One Well Gas Tube Fryer 23 liter

392084 (Z9FRGD1JFT)

23-lt gas tube fryer with 1 well and 2 half size baskets - free standing

Short Form Specification

Item No.

High efficiency 19 kW burners in stainless steel. Gas tubes (heat exchangers) inside well. Suitable for natural gas or LPG. Oil drains through a tap into a container positioned under the well. Height adjustable feet in stainless steel. Exterior panels in stainless steel. Worktop in 20/10, stainless steel. Right angled side edges eliminate gaps and possible dirt traps between units.

Main Features

- Thermostatic regulation of oil temperature from 110 °C up to a maximum of 190 °C.
- Flame failure device on each burner.
- Overheat protection thermostat as standard on all units.
- Oil drains through a tap into a drainage container positioned under the well.
- All major compartments located in front of unit for ease of maintenance.
- Piezo spark ignition for added safety.
- IPX5 water resistance certification.
- The special design of the control knob system guarantees against water infiltration.
- Unit delivered with four 50 mm legs in stainless steel as standard (all round Stainless steel kick plates as option).
- Supplied as standard with 2 half size baskets and 1 right side door for cupboard.
- Ideal for frying breaded, battered or floured foods in general.
- Tube burners located inside the well avoid food particles burning or spoiling the oil, reducing its usability.
- Gas appliance supplied for use with natural or LPG gas, conversion jets supplied as standard.

Construction

- Unit is 930 mm deep to give a larger working surface area.
- All exterior panels in Stainless Steel with Scotch Brite finishing.
- Model has right-angled side edges to allow flush fitting joints between units, eliminating gaps and possible dirt traps.
- Interior of well with rounded corners for ease of cleaning.
- One piece pressed 1.5 mm work top in Stainless steel.

APPROVAL: _____

Included Accessories

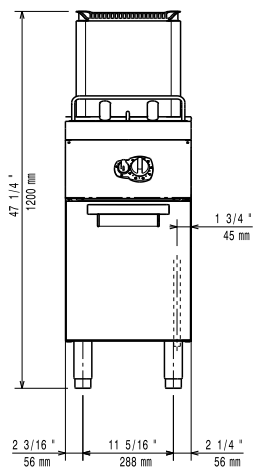
- 1 of Door for open base cupboard PNC 206342
- 1 of 2 half size baskets for 18/23lt well fryers PNC 927223

- 1 full size basket for 18/23lt well fryers PNC 927226 ☐

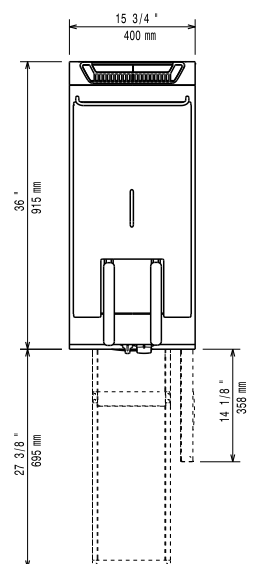
Optional Accessories

- Junction sealing kit PNC 206086 ☐
- Draught diverter, 120 mm diameter PNC 206126 ☐
- Matching ring for flue condenser, 120 -130 mm diameter PNC 206127 ☐
- 4 wheels, 2 swivelling with brake (EVO700/900). It is mandatory to install with base supports for feet/wheels. PNC 206135 ☐
- Frontal kicking strip for concrete installation, 400 mm PNC 206147 ☐
- Frontal kicking strip for concrete installation, 800 mm PNC 206148 ☐
- Frontal kicking strip for concrete installation, 1000 mm PNC 206150 ☐
- Frontal kicking strip for concrete installation, 1200 mm PNC 206151 ☐
- Frontal kicking strip for concrete installation, 1600 mm PNC 206152 ☐
- Pair of side kicking strips (concrete installation) PNC 206157 ☐
- Side handrail for right/left hand PNC 206165 ☐
- Frontal handrail 400 mm PNC 206166 ☐
- Frontal handrail 800 mm PNC 206167 ☐
- Frontal kicking strip, 400 mm PNC 206175 ☐
- Frontal kicking strip, 800 mm PNC 206176 ☐
- Frontal kicking strip, 1000 mm PNC 206177 ☐
- Frontal kicking strip, 1200 mm PNC 206178 ☐
- Frontal kicking strip, 1600 mm PNC 206179 ☐
- Pair of side kicking strips PNC 206180 ☐
- Large handrail (portioning shelf) 400 mm PNC 206185 ☐
- Large handrail (portioning shelf) 800 mm PNC 206186 ☐
- Frontal handrail 1200 mm PNC 206191 ☐
- Frontal handrail 1600 mm PNC 206192 ☐
- Hygienic lid for 23lt fryers PNC 206201 ☐
- 4 feet for concrete installation (not for 900 line freestanding grill) PNC 206210 ☐
- Water column with swivel arm (water column extension not included) PNC 206289 ☐
- Chimney upstand, 400 mm PNC 206303 ☐
- Flue condenser for 1/2 module, 120 mm diameter PNC 206310 ☐
- 2 side covering panels, height 700 mm, depth 900 mm PNC 206335 ☐
- Door for open base cupboard PNC 206342 ☐
- Filter for fryer oil collection basin for 15lt, 18lt, 23lt free standing fryers PNC 206359 ☐
- Base support for wheels for 23lt fryers (EVO900) PNC 206372 ☐
- 2 half size baskets for 18/23lt well fryers PNC 927223 ☐
- Pressure regulator for gas units PNC 927225 ☐

Front

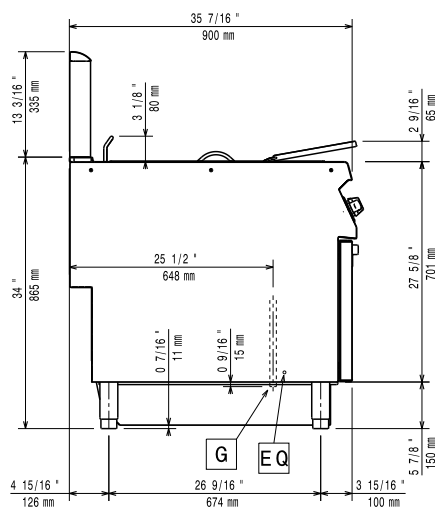


Top



G = Gas connection

Side



Gas

Gas Power:

392084 (Z9FRGD1JFT)

64771 Btu/hr (19 kW)

Gas Type Option:

LPG; Natural Gas

Gas Inlet:

1/2"

Natural gas - Pressure:

7" w.c. (17.4 mbar)

LPG Gas Pressure:

11" w.c. (27.7 mbar)

Key Information:

Usable well dimensions (width): 350 mm

Usable well dimensions (height): 365 mm

Usable well dimensions (depth): 400 mm

Well capacity: 21 lt MIN; 23 lt MAX

Thermostat Range: 110 °C MIN; 190 °C MAX

Net weight: 65 kg

Shipping weight: 75 kg

Shipping height: 1360 mm

Shipping width: 480 mm

Shipping depth: 1020 mm

Shipping volume: 0.67 m³

If appliance is set up or next to or against temperature sensitive furniture or similar, a safety gap of approximately 150 mm should be maintained or some form of heat insulation fitted.